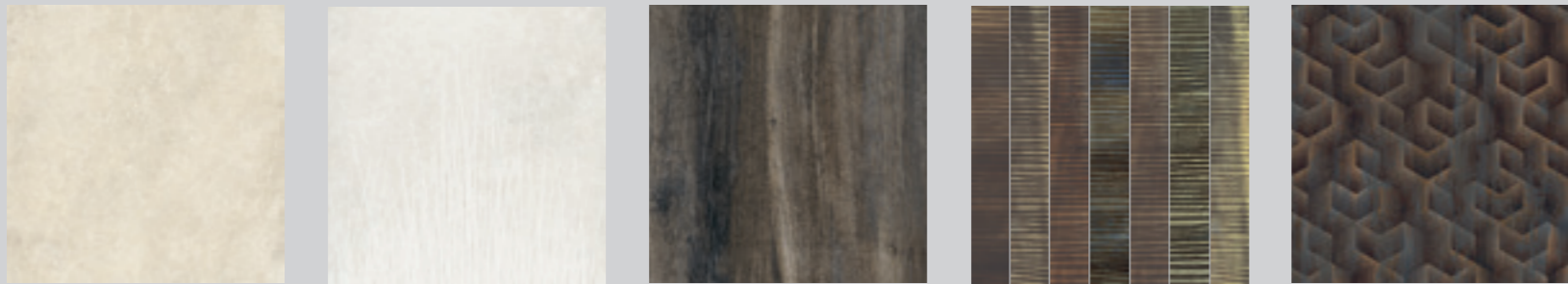




Untamed™

capturing the wild spirit of a coastal paradise

MI  **E** *stone*
Sustainable Tile, Made in the USA



Untamed™

“the marsh is so peaceful and yet it teems with life”

The Untamed porcelain tile collection reflects the untouched beauty of one of our nation’s most stunning national seashores: Cumberland Island, an unspoiled land that offers a retreat from civilization, allowing for reconnection with nature and personal healing.

In 1964, recognizing the profound benefits of such wild places to the human spirit, Congress passed The Wilderness Act with near-unanimous support, ensuring the protection of some of America’s most pristine landscapes. With the motto “conservation is never an accident” as a guide, in 1972 Congress designated Cumberland Island a national seashore, protecting 9,800 acres. This preservation ensured wildlife habitats would remain untouched, giving generations to come the opportunity to experience the land in its unaltered state.

Cumberland Island’s wild horses, salt marshes, maritime forests, sand dunes, and diverse ecosystem have inspired the colors, textures, and patterns of the Untamed porcelain tile collection. The collection captures the island’s serenity and solitude, allowing you to create spaces that evoke the same sense of peace and celebrate the vibrant life found there. Embrace biophilic design by bringing a touch of Cumberland Island to your space with Untamed.



Organic



Pristine

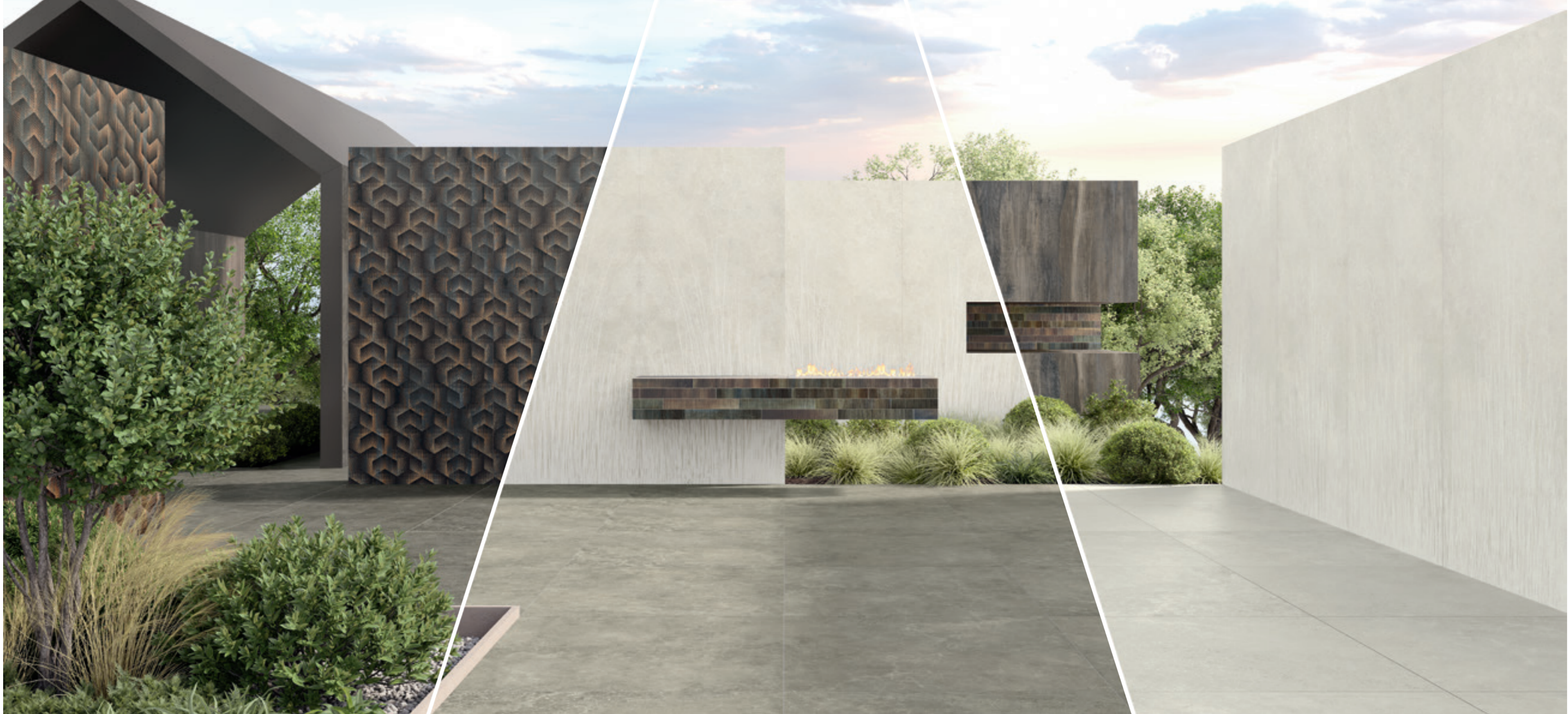


Tranquil,
Natural Beauty



The Untamed™ collection draws inspiration from the rich biodiversity and stunning natural landscapes of Cumberland Island, where vibrant ecosystems thrive in harmony. Evoking a connection that speaks to both the eye and the soul, the collection reflects the essence of biophilic design: bringing the outdoors in. As a manufacturer committed to sustainability, eco-conscious practices are implemented in every step of the production process, ensuring the tiles in Untamed reflect not only the island's beauty but also a deep respect for the environment. By using 100% regionally sourced raw materials for the body of the tile and innovative production techniques, we strive to minimize our carbon footprint, helping to preserve the very ecosystems that inspire us. This commitment allows us to celebrate the natural world while contributing to a healthier planet for future generations.



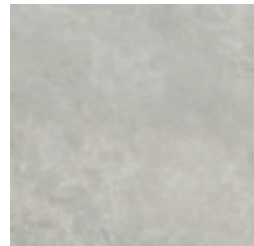


Wander

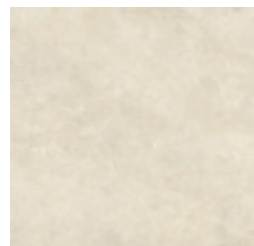
MATTE rectified



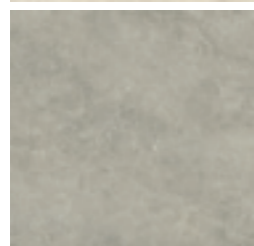
White



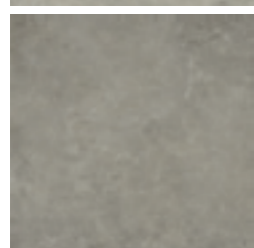
Cool



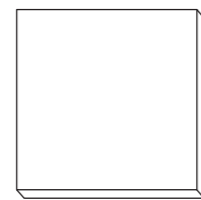
Warm



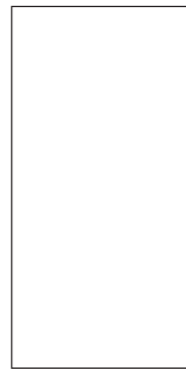
Sage



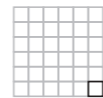
Ash



24"x24" 2CM Grip



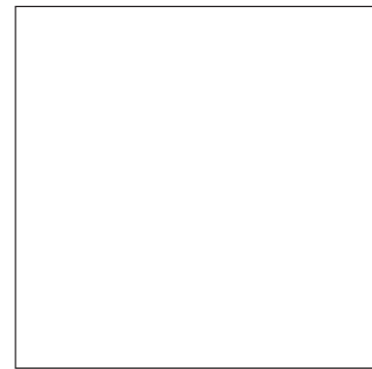
24"x48"



2"x2" Mosaic



12"x24"

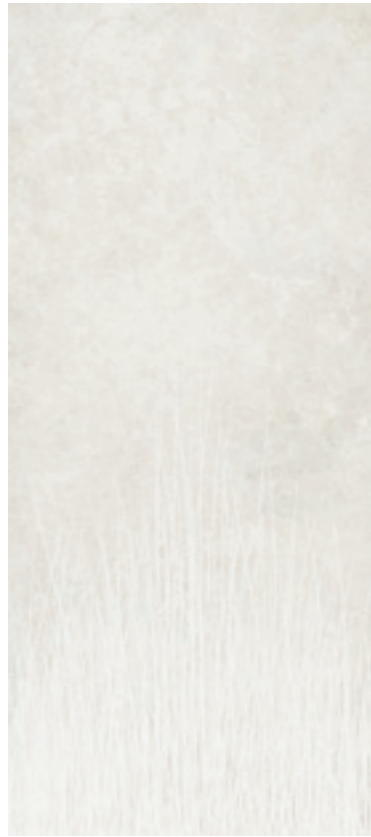


48"x48"



Flourish

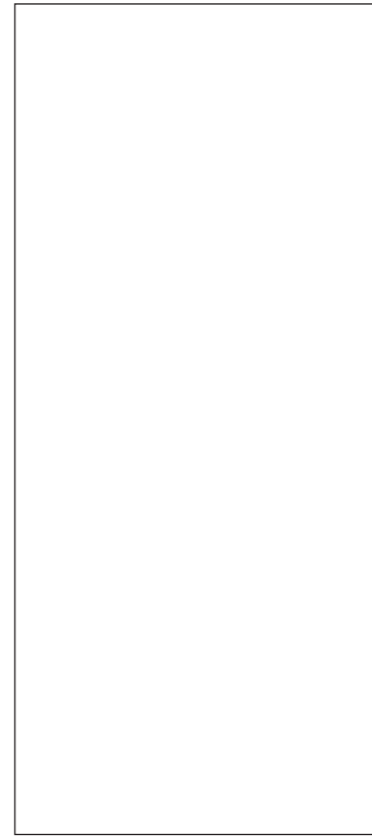
MATTE rectified



White



24"x48"



48"x110"

Drift

MATTE rectified



Drift Plank



24"x48"



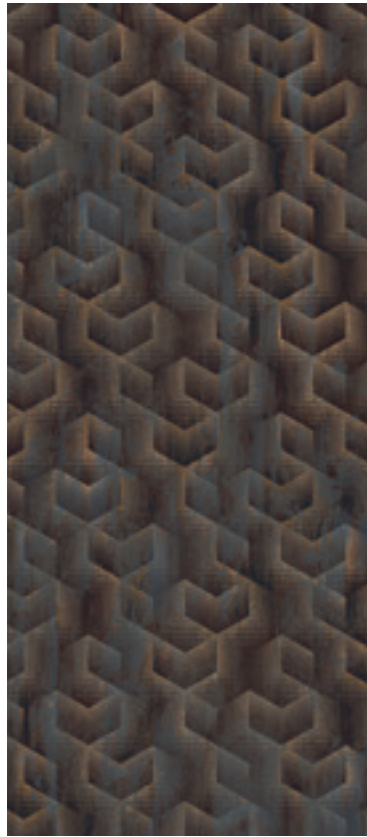
48"x110"

Roam

MATTE rectified



Deco 01



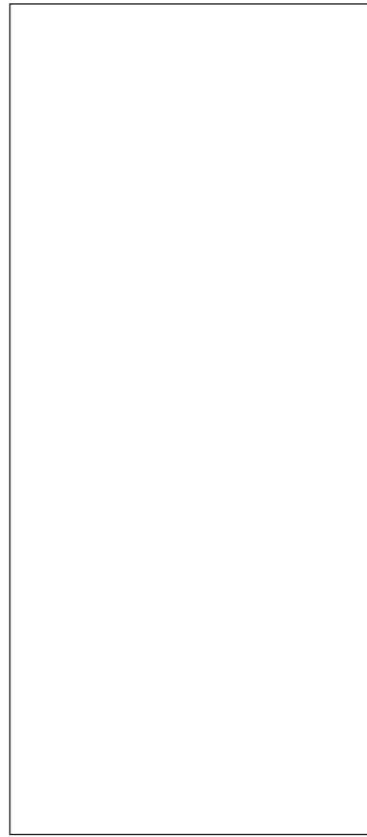
Deco 02



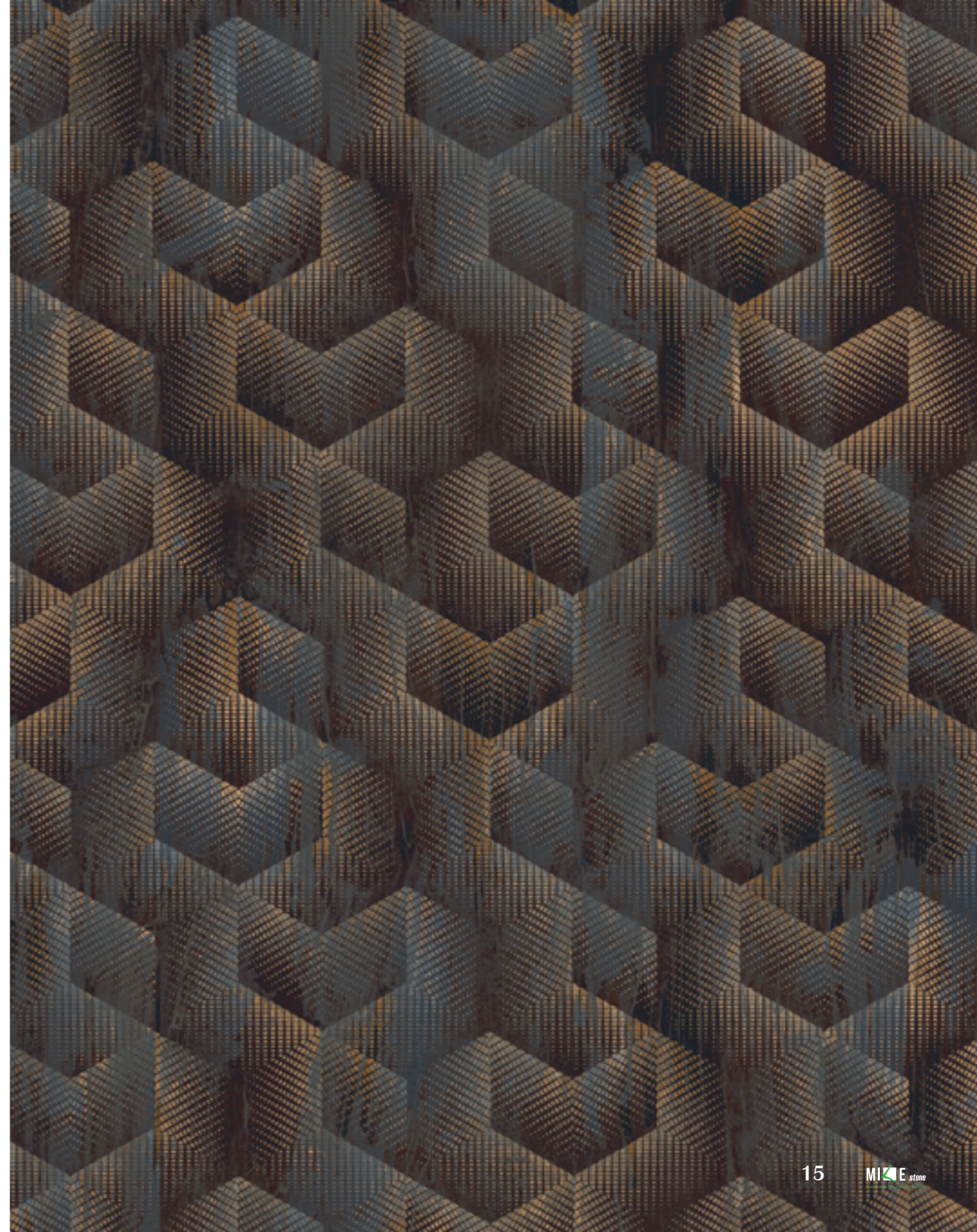
3"x24"
Deco 01 only

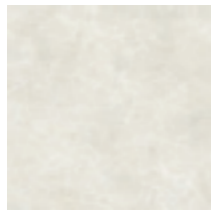


24"x48"
Deco 02 only



48"x110"
Deco 02 only



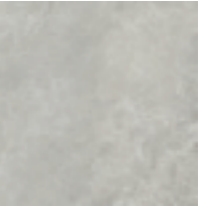


Wall

Untamed_Drift Plank_48"x110"_Matte
Untamed_Flourish White_48"x110"_Matte

Floor

Untamed_Wander White_2CM_24"x24"_Grip



Untamed

Floor

Untamed_Wander Cool_24"x24"_2CM_Grip

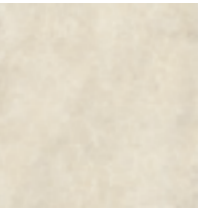


Wall

Untamed_Flourish White_48"x110" _Matte
Untamed_Wander Sage_24"x48" _Matte

Floor

Untamed_Wander Sage_24"x24" _2CM_Grip

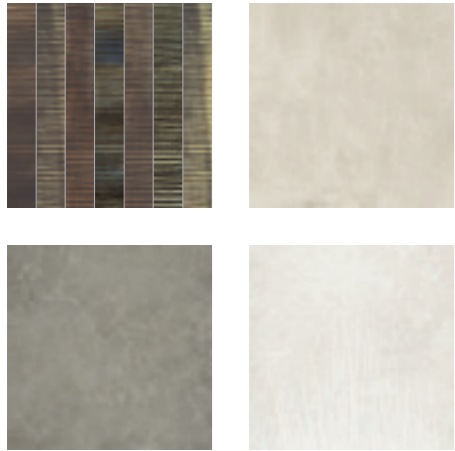


Wall

Untamed_Drift Plank_48"x110"_Matte

Floor

Untamed_Wander Warm_24"x24"_2CM_Grip



Wall

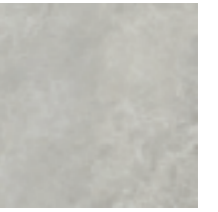
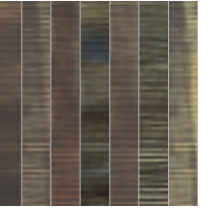
Untamed_Roam Deco 01_3"x24"_Matte
 Untamed_Flourish White_48"x110"_Matte

Table

imprint_Pre-Fab_Intaglio Kaolin_Matte

Floor

Untamed_Wander Ash_24"x24"_2CM_Grip



Top
Untamed_Roam Deco 01_3"x24"_Matte

Floor
Untamed_Roam Deco 01_3"x24"_Matte
Untamed_Wander Cool_24"x48"_Matte



Wall

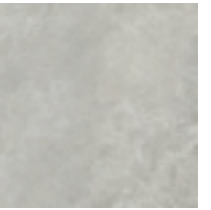
Untamed_Deco 02_48"x110" _Matte

Furniture

Untamed_Wander Sage_24"x48" _Matte

Floor

Untamed_Wander Sage_24"x48" _Matte



Wall

Untamed_Wander Cool_Mosaic 2"x2" _Matte
Untamed_Roam Deco 01_3"x24" _Matte

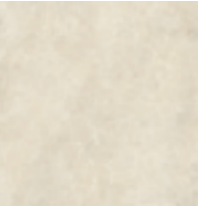


Wall

Untamed_Roam Deco 02_48"x110" _Matte
Untamed_Wander Warm_48"x48" _Matte

Floor

Untamed_Wander Warm_48"x48" _Matte



Wall In

Untamed_Drift Plank_48"x110" _Matte

Floor in

Untamed_Wander Warm_24"x48" _Matte

Untamed_Roam Deco 01_3"x24" _Matte

Floor out

Untamed_Wander Warm_24"x24" _2CM_Grip



Wall

Untamed_Roam_Deco 02_48"x110"_Matte
Untamed_Flourish White_48"x110"_Matte

Floor

Untamed_Wander Ash_48"x48"_Matte



Wall

Untamed_Roam Deco 02_48"x110" _Matte
Untamed_Wander Sage_48"x48" _Matte

Floor

Untamed_Wander Sage_48"x48" _Matte

Wander

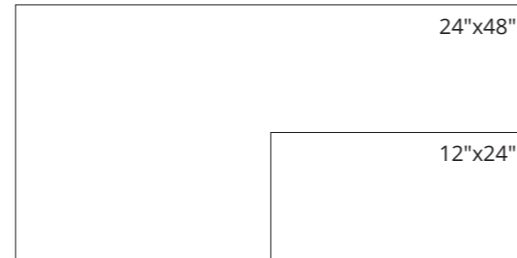
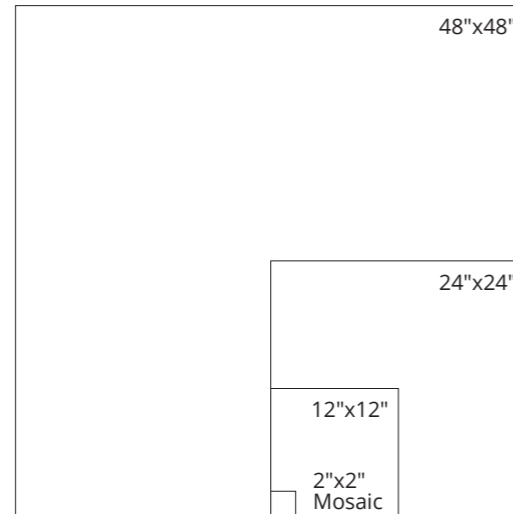
White

Sizes and finishes:

- 12"x24"
- 1105985 Matte rectified
- 24"x48"
- 1105975 Matte rectified
- 48"x48"
- 1105980 Matte rectified
- 24"x24" - 2CM Outdoor
- 1105955 Grip rectified
- 12"x12" (36Dot)
- 1105991 Matte rectified - Mosaic
- 3"x12"
- 1105996 Matte rectified - Bullnose

Applications:

- Floor
- Wall
- Outdoor



Wander

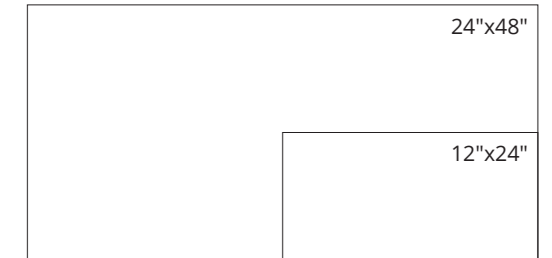
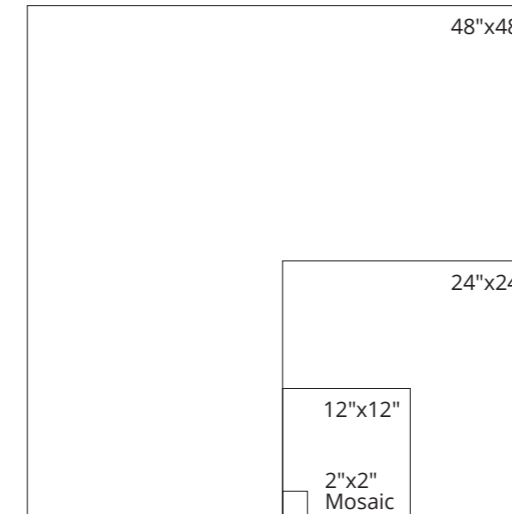
Ash

Sizes and finishes:

- 12"x24"
- 1105990 Matte rectified
- 24"x48"
- 1105979 Matte rectified
- 48"x48"
- 1104984 Matte rectified
- 24"x24" - 2CM Outdoor
- 1105959 Grip rectified
- 12"x12" (36Dot)
- 1105995 Matte rectified - Mosaic
- 3"x12"
- 1106000 Matte rectified - Bullnose

Applications:

- Floor
- Wall
- Outdoor



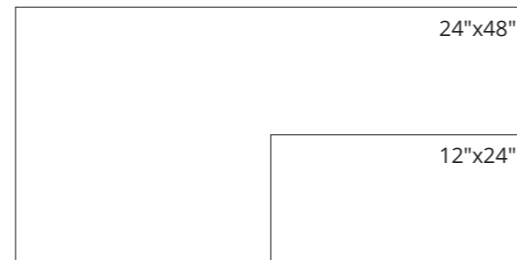
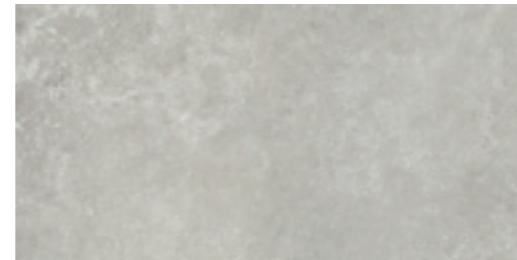
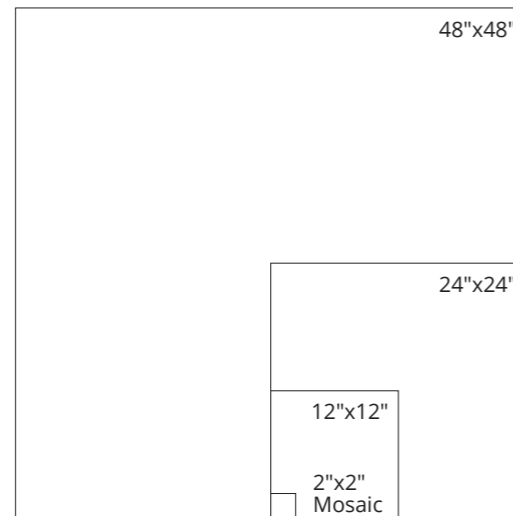
Cool

Sizes and finishes:

- 12"x24"
- 1105986 Matte rectified
- 24"x48"
- 1105976 Matte rectified
- 48"x48"
- 1105981 Matte rectified
- 24"x24" - 2CM Outdoor
- 1105956 Grip rectified
- 12"x12" (36Dot)
- 1105992 Matte rectified - Mosaic
- 3"x12"
- 1105997 Matte rectified - Bullnose

Applications:

- Floor
- Wall
- Outdoor



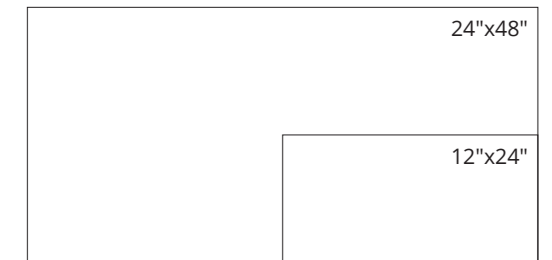
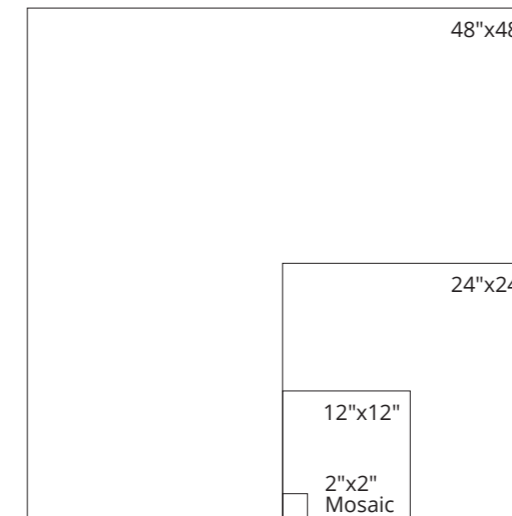
Sage

Sizes and finishes:

- 12"x24"
- 1105989 Matte rectified
- 24"x48"
- 1105978 Matte rectified
- 48"x48"
- 1105983 Matte rectified
- 24"x24" - 2CM Outdoor
- 1105958 Grip rectified
- 12"x12" (36Dot)
- 1105994 Matte rectified - Mosaic
- 3"x12"
- 1105999 Matte rectified - Bullnose

Applications:

- Floor
- Wall
- Outdoor



Wander

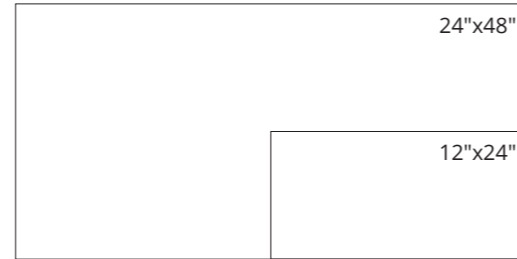
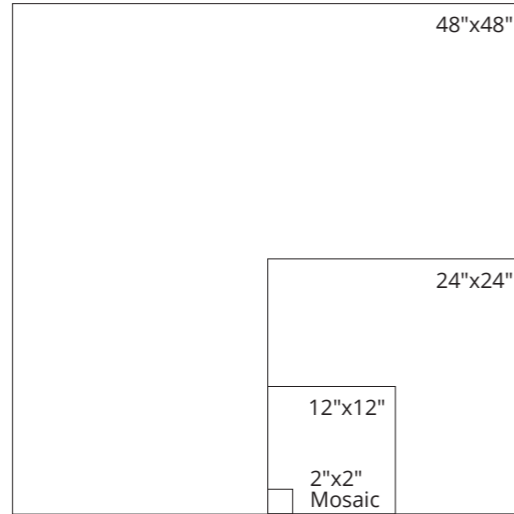
Warm

Sizes and finishes:

- 12"x24"
- 1105988 Matte rectified
- 24"x48"
- 1105977 Matte rectified
- 48"x48"
- 1105982 Matte rectified
- 24"x24" - 2CM Outdoor
- 1105957 Grip rectified
- 12"x12" (36Dot)
- 1105993 Matte rectified - Mosaic
- 3"x12"
- 1105998 Matte rectified - Bullnose

Applications:

- Floor
- Wall
- Outdoor



Flourish

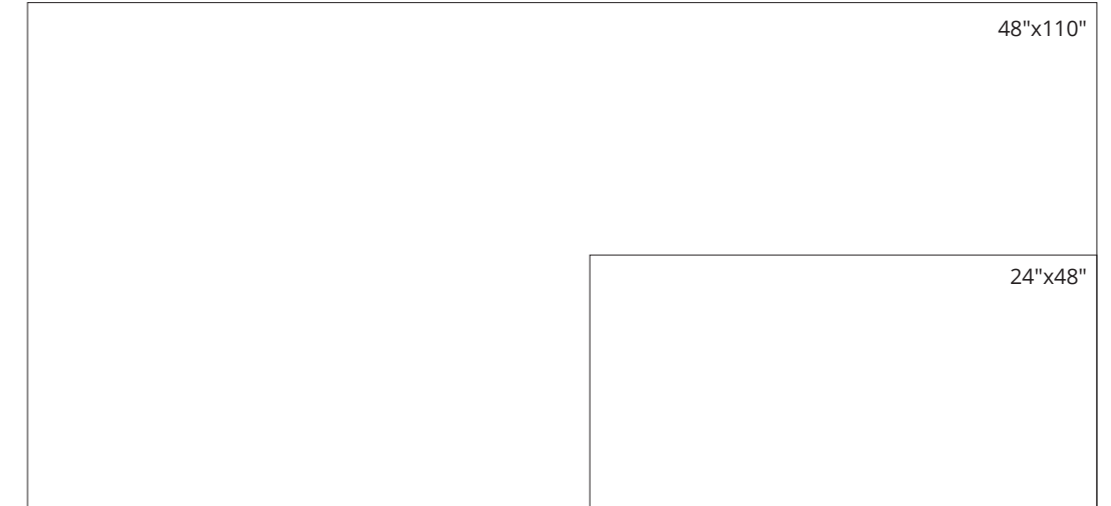
White

Sizes and finishes:

- 48"x110"
- 1106082 Matte rectified
- 24"x48"
- 1106080 Matte rectified

Applications:

- Floor
- Wall



Drift

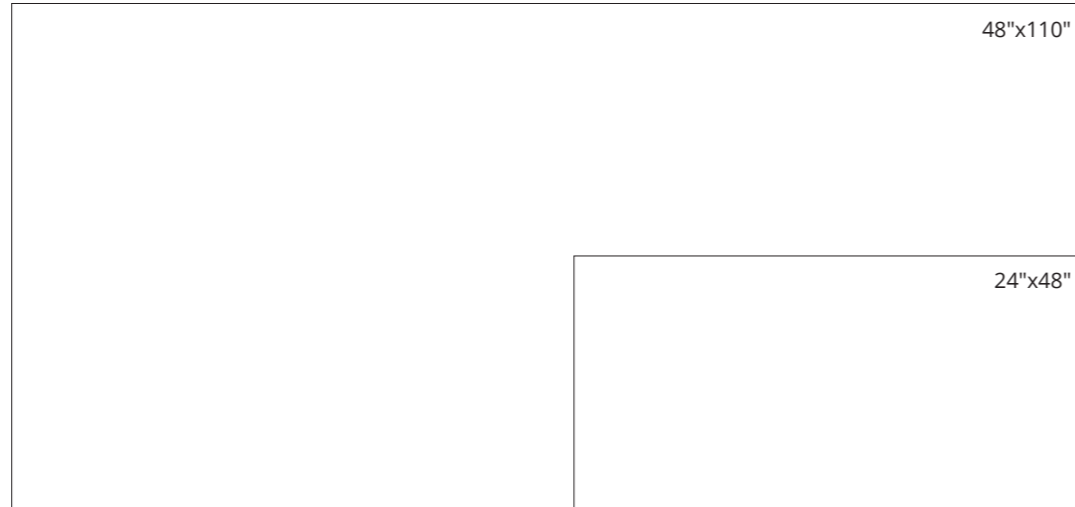
Drift Plank

Sizes and finishes:

- 48"x110"
- 1106083 Matte rectified
- 24"x48"
- 1106081 Matte rectified

Applications:

- Floor
- Wall



Roam

Deco 01

Sizes and finishes:

- 3"x24"
- 1106088 Matte rectified

Applications:

- Floor
- Wall



3"x24"

Roam

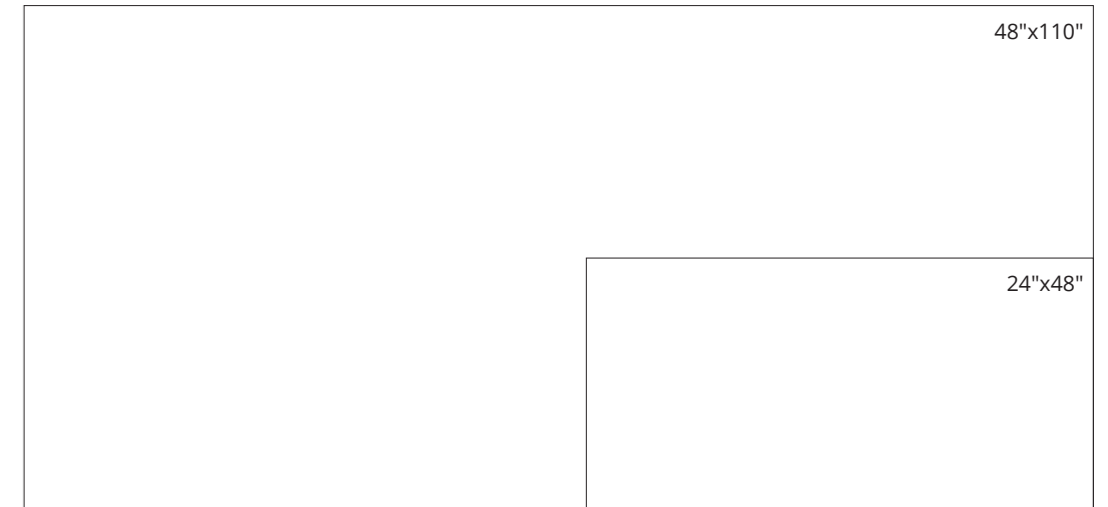
Deco 02

Sizes and finishes:

- 48"x110"
- 1106085 Matte rectified
- 24"x48"
- 1106084 Matte rectified






Applications:

- Floor
- Wall



Technical Specifications

This product meets or exceeds all standards described in ANSI A137.1.

	SPECS	TEST METHOD	INDUSTRY STANDARD	MILE [®] stone VALUES	
	WATER ABSORPTION	ASTM C373	≤0.5%	≤0.5%	
	SURFACE WEAR RESISTANCE	ANSI A137.1	Surface Wear-resistance properties of glazed vitreous and porcelain tiles.	ALL RESIDENTIAL / COMMERCIAL	
	CHEMICAL RESISTANCE	ASTM C650	A tile sample is placed in continuous contact with a variety of chemicals for 24 hours. Sample must show visible defects.	NOT AFFECTED	
	D.C.O.F. AcuTest [®]	ANSI A326.3	INDOOR ≥0.42 WET	≥0.42 WET	
			OUTDOOR ≥0.55 WET		
	STAIN RESISTANCE	ASTM C1378	Surfaces are exposed to staining agents for 24 hours followed by four cleaning procedures. Results are recorded post cleaning.	NOT AFFECTED	
	BREAKING STRENGTH GAUGED PORCELAIN 6 MM	ASTM C1505	≥175 lbf	≥200 lbf	
	BREAKING STRENGTH	ASTM C648	≥275 lbf	≥300 lbf	
	BREAKING STRENGTH OUTDOOR 2CM	ASTM 1505	2000 lbf (10.9 kN)	≥2500 lbf	
	RESISTANCE TO FREEZE	ASTM C1026	A tile sample is subjected to repeated processes of freezing and thawing. Sample must show no visible defects.	RESISTANT	
	WARPAGE EDGE	ASTM C485	±0.40% or ±0.05 in (±1.8 mm)	± 0.40%	Rectified
	WARPAGE DIAGONAL	ASTM C485	±0.40% or ±0.07 in (±1.8 mm)	± 0.40%	Rectified
	WEDGING	ASTM C502	±0.25% or ±0.03 in (±0.8 mm)	± 0.25%	Rectified
	WARPAGE EDGE	ASTM C485	±0.50% or ±0.07 in (±1.8 mm)	± 0.50%	Calibrated
	WARPAGE DIAGONAL	ASTM C485	±0.50% or ±0.07 in (±1.8 mm)	± 0.50%	Calibrated
	WEDGING	ASTM C502	±0.50% or ±0.08 in (±2.0 mm)	± 0.50%	Calibrated
	THICKNESS GAUGED PORCELAIN	ASTM C499	Range: ± 0.02 in	≤0.02 in	
	THICKNESS	ASTM C499	Range: ± 0.04 in	≤0.04 in	
	LENGTH / WIDTH VARIATION	ASTM C499	±0.25% or ±0.03 in (±0.8 mm)	±0.25%	

• Due to the inherent nature of fired porcelain tile, it is important to note that the coefficient of friction may vary within and between product runs.









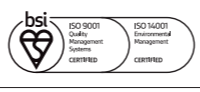

Cleaning & Maintenance / Routine Care Instructions



Scan the QR code with your smartphone.



Green Certifications & Accreditations

	DESCRIPTION
	Declare labels disclose all intentionally added ingredients and residuals present in the final product. Being Red List Free means the worst materials, chemicals, and elements for human and environmental health are not present within our products.
	The Health Product Declaration Collaborative transparency declaration for all of Florim USA's naturally occurring materials.
	Certification of plant and product specific Environmental Product Declaration (EPD) which tracks environmental impacts from the production of porcelain tile.
	Tile Council of North America and the American National Standards Institute's standard for sustainability and environmental impact.
	Underwriter's Laboratories certification of low emitting materials. Florim USA is Green Guard Gold certified.
	Defines post-consumer content of as much as 3% recycled material which reduces landfill impact. Certified by Bureau Veritas.
	Defines pre-consumer content of as much as 45% recycled material which reduces our carbon footprint. Certified by Bureau Veritas.
	Florim USA's sustainability and social practices support the mission of The International Living Future Institute which strives to create a socially just, culturally rich, and ecologically restorative community.
	USGBC is committed to suit a more sustainable life. Florim USA supports this mission by manufacturing products which aid architects in achieving USGBC certification.
	Florim USA is proud to regionally source 100% of the raw materials used in the production of the body of our tile, supporting local industries and sustainable practices.
	Florim USA actively participates in the Tile Council of North America which allows us to be on the forefront of advances in the tile industry and its standards.
	The Tennessee Recycling Coalition is dedicated to promoting recycling and sustainable material management practices, and awarded Florim USA the Tennessee Recycler of the Year award for 2020.
	ISO 9001 & ISO 14001 are globally recognized standards. ISO 9001 certifies that Florim USA products and practices continually meet and exceed customer and regulatory requirements. ISO 14001 certifies that Florim USA complies with environmental regulations and that its manufacturing practices are environmentally conscious.
	Florim USA updated its corporate charter in 2022 to become a Benefit Corporation. Our company is committed to maintaining this designation through initiatives focused on sustainability, social responsibility, ethical business practices and transparent, annual reporting on our social and environmental performance.

This product meets or exceeds all standards described in ANSI A137.1 & A137.3. / Este producto cumple o excede todos los estandares de ANSI A137.1 & A137.3. Our packaging is recyclable. Please visit earth911.com to find a recycling location near you.

Progress that invests in the entire society

As an active member of the U.S Green Building Council, MILE®stone spreads awareness to the community and encourages the use of building solutions through environmentally friendly practices.

Our products positively contribute to the requirements for obtaining the LEED (Leadership in Energy and Environmental Design) and WELL (IWBI) certifications.

A commitment to environmental sustainability and responsibility

We are committed to conscious development that minimizes the negative impact of manufacturing production on the environment. Our general approach to sustainability intersects with our business strategy to embrace three areas of responsibility: economic, social, and environmental. Some ways we prove this are:

- Products containing as much as 45% recycled content.
- Post-consumer recycled content levels as much as 3%.
- Zero industrial wastewater discharge.
- A 99% internal process recycling rate.
- 100% regionally sourced raw materials used in the production of the body of our tile, supporting local industries and sustainable practices.

MILE®stone is taking these and other steps, as well as actively investing to reduce carbon emissions to ensure that we reach full carbon neutrality.



MADE IN THE USA



300 International Blvd. Clarksville, TN 37040 | www.milestonetiles.com | 1-877-356-7461

